

[View in browser](#)

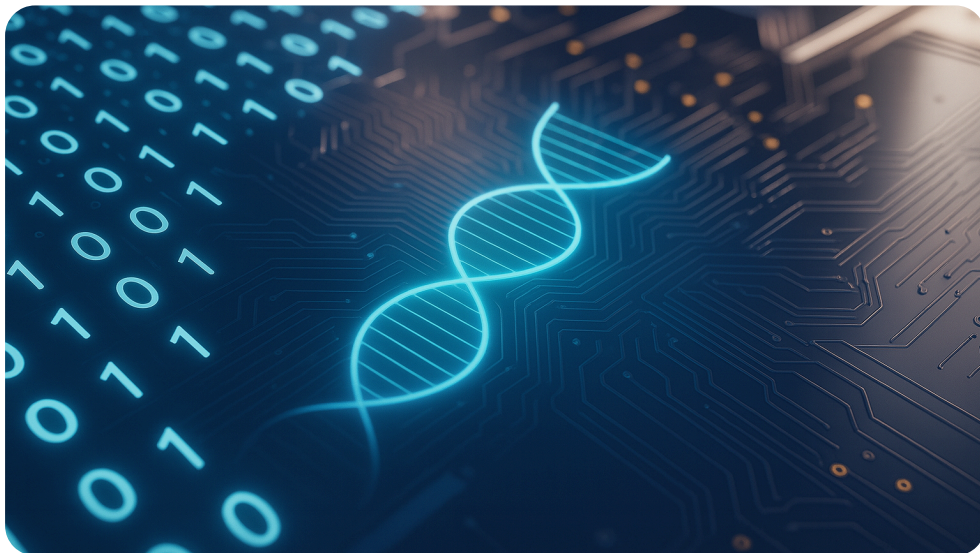


INESC capable-ID

Issue #10 | January 2026

Welcome to the 10th edition of INESC capable-ID, the official newsletter of INESC-ID. Research has real impact when it is centred on people, not just technology. In this first issue of 2026, we explore digital health to prevent disease, human-inspired AI for medical imaging, and the growing need to understand what AI systems remember. We also celebrate our researchers' work advancing inclusion, trust, and education. A new year, same mission.

In Depth



HeartGenetics — from code to genes

How can we manage our health properly without understanding our genes? When HeartGenetics emerged from INESC-ID, co-founded by researcher Ana Teresa Freitas, genetic screening was still far away from everyday healthcare. Today, the company brings together genetics, machine learning, clinical research, and user-centred design to help anticipate risk, prevent disease, and support more personalised health decisions.

[Know More](#)

Research Highlights



INESC-ID researchers develop AI model inspired by human vision

From facial recognition to self-driving cars, AI-based computer vision is increasingly present in everyday life. INESC-ID Researchers Lucas Piper and Arlindo Oliveira, together with Tiago Marques from the Champalimaud Foundation, developed EVNets - an AI model inspired by the primate visual system that improves robustness in image analysis and is already being tested in medical imaging.

[Know more](#)

In the Media

INESC-ID's research revealing AI-memorised copyrighted content featured in The Register

The undisclosed sources behind large language models' knowledge, and growing claims of copyright infringement, are raising serious concerns. Research by INESC-ID PhD student André Duarte, with Arlindo Oliveira and colleagues, was featured in The Register, presenting a software agent designed to better understand how memorisation occurs in large language models.

[Know more](#)



Spotlight



INESC-ID Awards 2025: celebrating research excellence and the people who make it

Closing last year, the INESC-ID Awards 2025 brought together researchers, students and staff to recognise three outstanding contributions to the institute's scientific life and impact. The ceremony honoured Luísa Coheur as Best INESC-ID Researcher, Christof Torres as Best Young Researcher, and Pedro Orvalho as Best PhD Student.

[Know More](#)

Reaching In



What fun it is to laugh and chat at the INESC Lx Christmas party

Holiday celebrations wouldn't be complete without INESC Lx's traditional Christmas party. Colleagues from INESC-ID, INESC-MN and INOV, gathered around for a cozy evening of snacks and lively chat, with a brief address from the Directors.

Awards and Achievements



Catarina Botelho wins Rede Saúde Award

Catarina Botelho, former INESC-ID PhD student and researcher, was awarded first place in the ULisboa RedeSAÚDE Awards 2025, in the category “Health Systems / Entrepreneurship / Digital Transition”. Her prize-winning work, developed during her PhD, explores the early detection of Alzheimer’s disease through speech analysis, showcasing the potential of large language models in health applications.

People of INESC-ID

Jussara Rowland

“I’m still a sociologist, even at INESC-ID”, says Jussara. It is a way of seeing the world that has taken her from disaster resilience to carbon storage, and to the social impact of digital technologies. Born in Lisbon, Jussara spent her teenage years in Florence, returning to Portugal to graduate at ISCTE. She recently joined INESC-ID as coordinator of the SDT thematic line and researcher, connecting colleagues and partners within and beyond the institute. In her free time, she is also a *mudlarker* – worth looking it up! At low tide, you can find her along the banks or the river Tagus, searching for fragments of our history.





Bárbara Ramalho

Keen to learn a little about everything, Bárbara followed her curiosity into Telecommunications & Informatics Engineering and a master's in Information and Personality Visualisation. Passionate about her research, she is currently doing her PhD, working within the iProlepsis project to develop an app for people with arthritis. Besides the research topic itself, she loves to mix technical and social sciences and to work across all aspects of a system. When not working, you may find her listening to music or taking swimming lessons, which she took up recently.

We Recommend

Murais de Almada nas Gares Marítimas

For more than two millennia, Lisbon has been a safe harbour for people, cultures and trade in constant exchange. At the Alcântara and Conde d'Óbidos maritime stations, the recently opened Interpretative Centre "Murais de Almada nas Gares Marítimas" invites visitors to discover the monumental murals of the irreverent and uncompromising [Almada Negreiros](#), alongside the many human stories of arrival, departure and passage that shaped these grounds in the first half of the 20th century. Open daily from 10h00 to 18h00.



[Know more](#)

INESC-ID | Rua Alves Redol, 9 | 1000-029 Lisbon
Tel: +351 213 100 300 | info@inesc-id.pt | www.inesc-id.pt

You are receiving this newsletter because you opted-in to receive communications from INESC-ID. You can unsubscribe at anytime by clicking "unsubscribe" at the bottom of this page.



Created by INESC-ID's Communications and Outreach Office

[Legal Notice](#) | [Privacy Policy](#) | [Unsubscribe](#)